

2014-2015

BREAK THE CYCLE 10

MARKING A DECADE OF

BREAKING THE CYCLE OF ENVIRONMENTAL HEALTH DISPARITIES IN CHILDREN

A Project of:

Southeast Pediatric Environmental Health Specialty Unit at Emory University
Innovative Solutions for Disadvantage and Disability



We invite you to participate in our 2015 Break the Cycle program focusing on children's health and the environment. Children who grow up in circumstances of social and economic disadvantage are at greater risk for exposure to adverse environmental factors and are more likely to suffer consequent adverse health and developmental outcomes. Break the Cycle supports a set of student driven research projects that creatively address the promotion of health equity for all children in the context of how social and economic factors result in children's environmental health disparities.

Students are invited to work with their academic mentors to submit proposal abstracts. The abstracts will be reviewed and a limited number will be selected. Those selected will have the opportunity to work with the Break the Cycle team and with other students from around the country and internationally to complete the project and present their research at an annual conference scheduled for April 2015. Students will also have the opportunity to publish their work in an international peer-reviewed journal.

The expectation is that the research will commence at the time of selection and will be completed by the time of the conference in April 2015. There will be monthly conference calls to review projects and provide perspectives and guidance. During these conference calls, faculty and students have an opportunity to communicate and collaborate with their counterparts in other disciplines at other universities.

This will be the 10th Break the Cycle Program since 2005. To date, we have partnered with 29 different university departments in 7 states and internationally, and have supported research for 86 students. We have had 5 monographs published in international journals and we are in the process of collecting the papers for the next monograph from the 9th annual conference held in April 2014. We completed a survey of all past students and have found that the students rated their experience with Break the Cycle valuable and many continued to pursue career interests and direction related to their work on the Break the Cycle projects.

This year we would like for students to focus on demonstrating how their project can make a difference not only for a individual or a small group of individuals, but how that impact can result in a greater benefit to society. This can be examined in benefits on health, education, employment, income or savings to individuals, groups of individuals or on society and its educational and health care institutions.

Costs of travel and lodging for the student and faculty mentor to the annual conference will be supported by Break the Cycle and the student will receive a modest stipend at the end of the project.

We invite students to submit a proposal abstract (form enclosed) by **September 30, 2014**. Proposals received will be reviewed by a Break the Cycle panel and decisions of the panel will be communicated to all applicants by **October 24, 2014**. We are looking forward to working with students and their mentors on the 10th annual Break the Cycle set of projects and making this cycle another great success.

If you have any further questions, feel free to contact me at lrubi01@emory.edu or our Project Coordinator, Janice Nodvin, at jnodvin@emory.edu, and we will be happy to discuss potential projects with you and your students.

Please see the enclosed guidelines for further information.

Best wishes for success.

Thanks.

Leslie Rubin

Leslie Rubin, MD
Director, Break the Cycle Program

BREAK THE CYCLE TEAM

- I. Leslie Rubin, MD
- Robert J. Geller, MD
- Maeve Howett, PhD, RN, CPNP, IBCLC
- Janice Nodvin, BA

VISIT US AT:

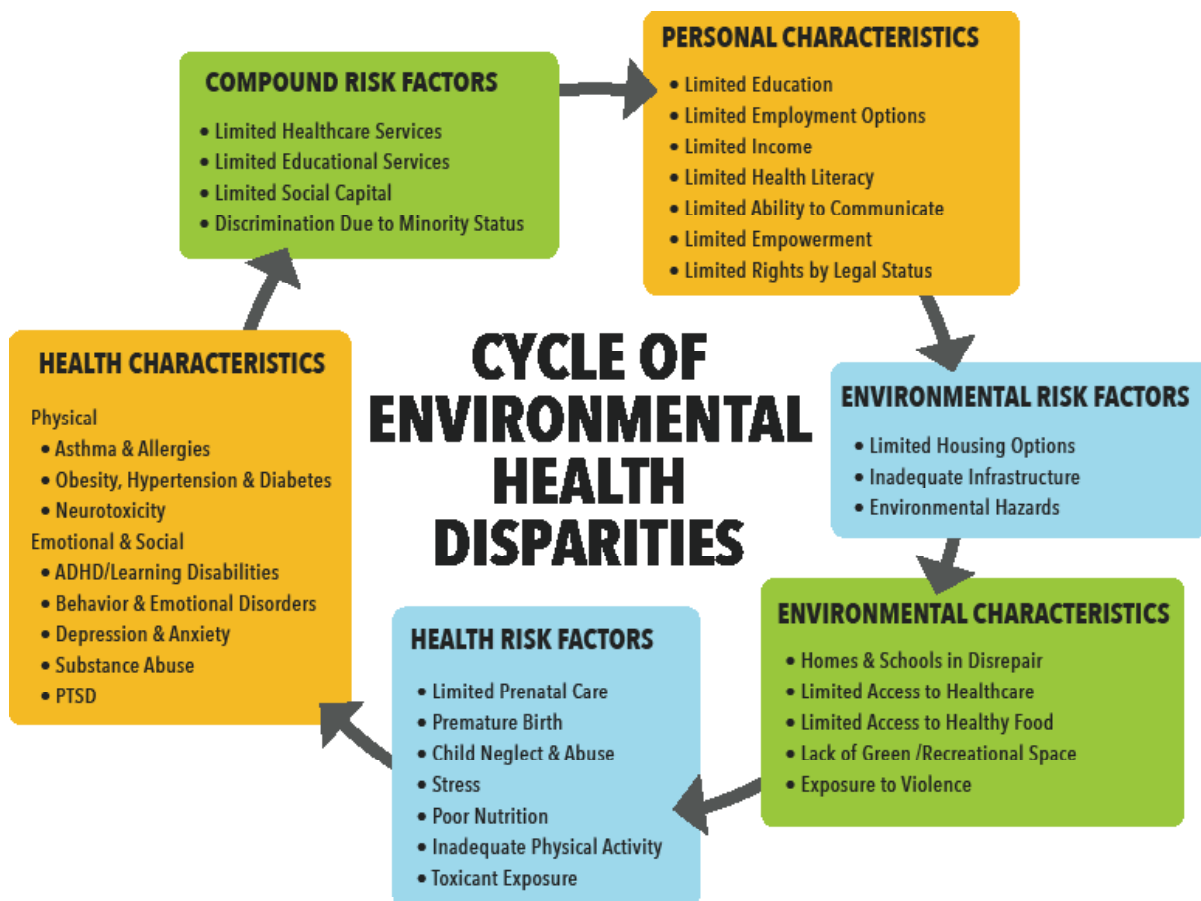
- www.pehsu.emory.edu
- www.isdd-home.org

Break the Cycle is a collaborative interdisciplinary research and training program involving University faculty who mentor graduate and undergraduate students in academic tracks that focus on the impact of environmental factors on children's health. The target populations are communities where the environmental hazards are related to circumstances of social and economic disadvantage. Each student will be required to develop a project that focuses on reducing or preventing environmental health related illnesses and disorders for children who live in these communities. At the end of the project period the students will present their studies and their findings in a symposium and will be required to write papers that will then be published in a journal. Our budget allows us to provide for travel and lodging for the annual conference and a modest stipend for the student on completion of the project.

ENVIRONMENTAL HEALTH DISPARITIES

The diagram below represents how adverse social and economic factors may play out in the environment of a child and the impact that it has on health, development, education and future for the children in such communities. Substantial evidence, across a variety of academic and public policy areas, supports the relationships and patterns depicted in the diagram. This is the societal challenge of Environmental Health Disparities. There is no question of the need to interrupt and modify this set of relationships to change the course to create advantages for the children to break out of the cycle. In the big picture, the task is great and the cost is high. However, that does not mean that we cannot make a difference. We feel that any interruption is positive and can make a big difference for an individual, for a family or for a community – indeed, the expectation is that the student projects will have a ripple effect not only on the communities, but also on the careers of the students to prepare them to be better leaders and stewards of our collective future.

We therefore, invite interested students to develop a creative project to Break the Cycle at any point, and thereby reduce the phenomenon of Environmental Health Disparities and promote optimal health and well-being for children and their families.



PROJECT GUIDELINES

1. University Faculty will identify students who have an interest in this program and encourage and support the student in the selection of a topic for research. We are looking for projects that address environmental factors that adversely affect the health of children living in circumstances of social and economic disadvantage.
2. During the project period there will be monthly conference calls to monitor the progress of the research projects, share ideas and assure that the project is consistent with the spirit of the Break the Cycle concept. These conference calls are a requirement of students and their mentors.
3. There will be a conference for the collective presentation of the student projects which will be open to the public and includes a keynote speaker of national stature
4. The students are expected to write papers on their projects which will be submitted for publication in an international journal as a monograph of the Break the Cycle projects.
5. Students are requested to suggest what the next steps are in their particular projects
6. Funding of travel expense and accommodation will be provided for the student and faculty mentor and modest stipends will be provided to the students at the completion of their work.
7. The progress and careers of the participating students will be tracked to evaluate the impact of their participation in the Break the Cycle Program on their academic or professional careers.

THE DESIRED OUTCOME:

- To inspire students from a variety of academic disciplines to explore the relationship between adverse social, economic and environmental factors and the health and development of children and to creatively generate strategies to address the challenges,
- To collaborate with an interdisciplinary team of academic leaders from different universities and colleges to creatively examine the broader issues of this topic area
- To promote leadership among the students
- To encourage faculty of our university partners promote academic interest and social awareness in children's environmental health particularly in Environmental Health Disparities

TENTATIVE TIME LINE OF ACTIVITY: AUGUST 2014 THROUGH JUNE 2015

2014

August - September	Announce Break the Cycle 10 to University Faculty to invite students to submit proposals.
September 30	Deadline to submit abstract for consideration
October 15	Announcement of acceptance of proposals
October 24	First conference call will take place Review project topics, expectations of program Monthly conference calls will be scheduled.
November 14	Students finalize detailed description of project. November conference call Begin conference planning according to academic calendar.

2014 - 2015

Nov - Feb	Required monthly conference calls with faculty and students to review progress
March 27	Students submit PowerPoint presentation for review
April 23	Conference held in Atlanta
June 1	Completion of 1st draft of papers for publication
June 30	Completion of Project